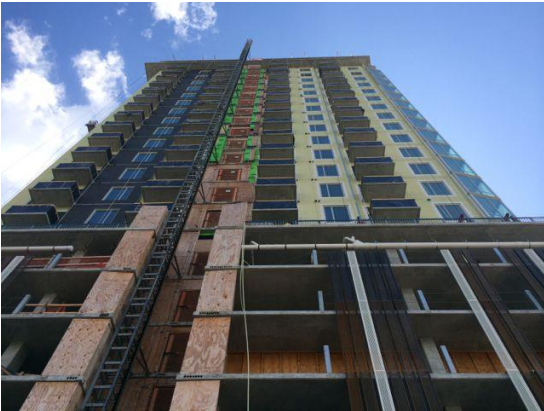


PROJECT PROFILE

The “Seven” Apartments

Austin, TX



OVERVIEW

The downtown core of Austin is a rapidly growing center for urban housing. The challenge developers face is that new construction needs to grow vertically in this space-constrained part of town. Growing up, not out creates its own set of challenges. When a new luxury apartment complex needed a price competitive underlayment with a UL fire rating, they turned to **AccuCrete®** for the solution.



PROJECT DETAILS

The “Seven” high rise in downtown Austin is 24 stories tall with 220 luxury 1 and 2 bedroom units. One particular challenge included getting concrete up to the 24th floor, where they needed to provide a suitable fire-rating over a steel deck. Getting a gypsum-based poured underlayment up that high might be daunting for some contractors, but not for our partner Cemplex Group LLC, Texas.

SOLUTION

Cemplex chose **AccuLevel® G40** for the job. The product was mixed on the 23rd floor and pumped up to the 24th floor. AccuLevel® G40 gives you high compressive strength, a smooth floor finish, and a price unmatched in the industry. This gypsum-based product provides economic solutions for large-scale projects, while keeping project estimations at a minimum to give applicators and general contractors a more competitive edge.



Applicator
Cemplex Group
LLC, Texas

General Contractor
J.E. Dunn

Product
AccuLevel® G40



ACG MATERIALS 1550 Double Drive, Norman, OK